

CS32 ACCESSORIES GUIDE

Accessories Guide



Honeywell

TABLE OF CONTENTS

- 3 Charging Bases
- 3 Power Supplies
- 4 Other Accessories

CHARGING BASES



CS32-SC-0

Single charging base for one CS32 terminal. Power supply must be purchased separately.



CS32-TBC-0

3-bay charging base for three CS32 terminals. Power supply must be purchased separately.

POWER SUPPLIES



50121666-001

Power Adapter, 12V 3A for CT50/CT60 HB/EB/QBC, CN80, 8680i/8690i/8675i 4-bay, 8675i 8-bay bat charger, CS32 charge base (up to 3 devices in cascade), Ethernet base and charge-only home base. Region-specific power cord required, sold separately



50121667-001

Power Adapter, 12V 7A, without power cord, for CT50 / CT60 / CN80, RP2/RP4 battery charger and PB22, quad battery charger, CS32 charge base (up to 6 devices in cascade), Requires country-specific line cord to be ordered separately



3015-6974-001

Power Adapter, 12V 15A without power cord. for use with for use with the CS32 charge bases, able to charge up to 12 cascade devices. Region-specific power cord needs to be ordered separately.



3017-3549-001

CS32 cascade power cable, used to connect and cascade multiple charging bases.



77900507E

Cable: power cord, power supply to AC outlet, straight (UK type G, C13), 2.5 m (8.2 ft)



77900508E

Cable: power cord, power supply to AC outlet, straight, (EU type C, C13), IEC320-C13, 2.5 m (8.2 ft)



50164695-002

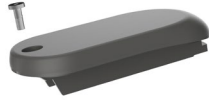
CS32 standard rechargeable battery pack, 3.635 V, 6700mAh.

OTHER ACCESSORIES



CS32-DRIVER

Multi-purpose screw driver for USB interface, power button cover, battery cap, and charging base release hole.



CS32-BATCAP

CS32 battery cap

For more information

automation.honeywell.com

Honeywell Industrial Automation

855 South Mint Street
Charlotte, NC 28202
800-582-4263

www.honeywell.com

CS32 Accessories Guide | 07/25
©2025 Honeywell International Inc.

Honeywell