



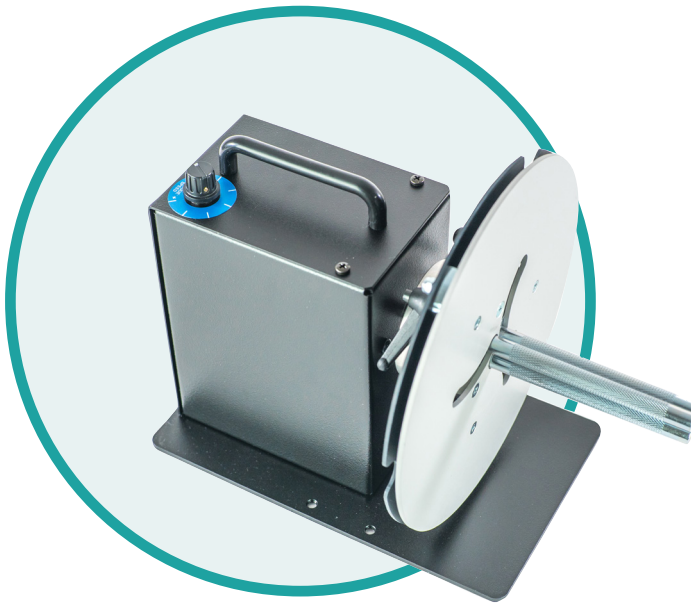
MSC OFFERS YOU A RANGE OF PRINTER  
ACCESSORIES TO WORK SMARTER, EASIER AND FASTER.

LABEL DISPENSERS  
LABEL REWINDERS  
LABEL UNWINDERS  
LABEL COUNTERS

# Label rewinders

## MINI-CAT REWINDERS MC-10/MC-11

The MINI-CAT rewinders are the world's most popular entry-level label rewinders to be used in combination with small desktop or mid-range barcode printers. With a specially designed bi-directional motor, they offer trouble-free performance at an incredible low cost.



- ✓ Small footprint to fit on any desk
- ✓ Easy setup: attach the labels to the take-up core and ready to start
- ✓ Speed up to 50cm/sec to work with desktop or mid-range barcode printers
- ✓ Bi-Directional
- ✓ Large capacity for roll diameters up to 220mm
- ✓ MC-11 model employs an adjustable core holder (ACH) enabling the use of varying core sizes from 25mm to 101mm
- ✓ Adjust the rewind force with a built-in potentiometer

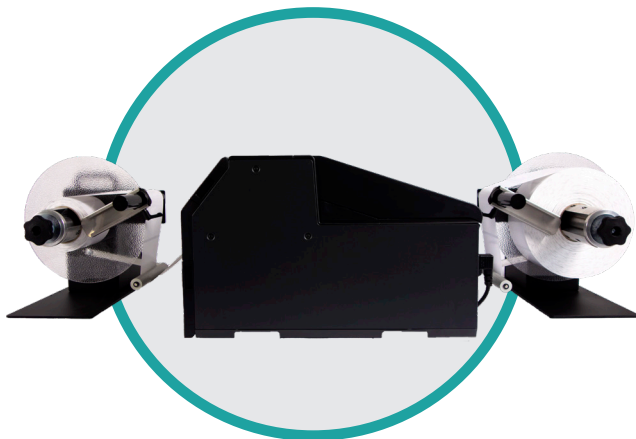
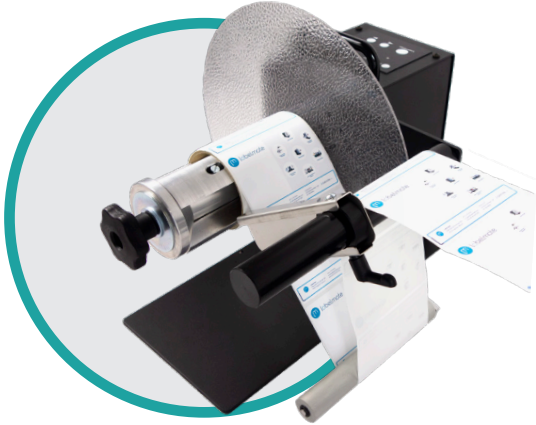
## MOST POPULAR CHOICES

P/N	MODEL	DESCRIPTION	MAX LABEL WIDTH	PRICE
LMR001	MC-10	Standard for rewinding on cores 76mm. On request for core diameters 38/40/44/50/70/100 mm.	125 mm	404 €
LMR002	MC-10-1-INCH	Standard for rewinding on cores 25,4 mm	125 mm	404 €
LMR003	MC-11	With Adjustable Core Holder, for rewinding on cores between 25 and 101 mm diameter.	115 mm	429 €

# Industrial & colour

## UNIVERSAL & INTELLIGENT UNI-CAT

The new UNI-CAT is the smartest and most “UNI-VERSATILE” rewinder/unwinder in the Labelmate product range ! With various core sizes, label widths, roll diameters and options to choose from, there is a rewinder/unwinder to fit any job you may have. The new UNI-CAT replaces all CAT-3-TA models (with Tension Arm) and CAT-4 models.



- ✓ Self-teaching to work as rewinder or unwinder
- ✓ Supports back-feed process for colour inkjet & tension sensitive printers
- ✓ Auto-Speed Adjustment to align with printer speed
- ✓ Speed up to 125cm/sec to work with the fastest bar-code printers available
- ✓ Bi-Directional for internal & external winding
- ✓ New maintenance free, soft-touch control panel with LED-Status-Indicators
- ✓ Standard with paper guide for straight and tight label rolls, no flanges needed

## MOST POPULAR CHOICES

P/N	MODEL	DESCRIPTION	MAX LABEL WIDTH	MAX ROLL DIAM	MAX WEIGHT	PRICE
LMR042	UNI-CAT-STANDARD	Standard for 76mm cores (38/40/44/50/70/100mm available)	155 mm	300 mm	8 KG	832€
LMR043	UNI-CAT-ACH	Adjustable Core Holder for using any core diameter between 25 & 101 mm.	155 mm	280 mm	7 KG	894 €
LMR044	UNI-CAT-CHUCK	Easy-Loading Quick-Chuck for 76mm cores (38/40/44/70/100mm available)	170 mm (optional 220 & 270)	300 mm	10 KG	1042 €
LMR044 /LMX484	UNI-CAT-CHUCK	Easy-Loading Quick-Chuck for 76mm cores	220 mm	300 mm	10 KG	1094 €
LMR044 /LMX485	UNI-CAT-CHUCK	Easy-Loading Quick-Chuck for 76mm cores	270 mm	300 mm	10 KG	1164 €

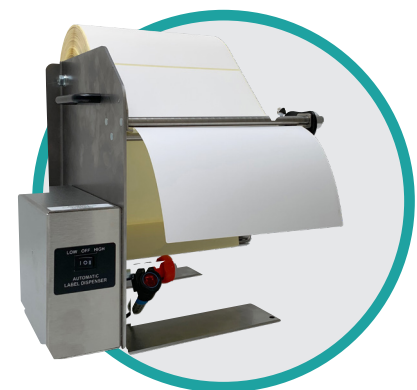
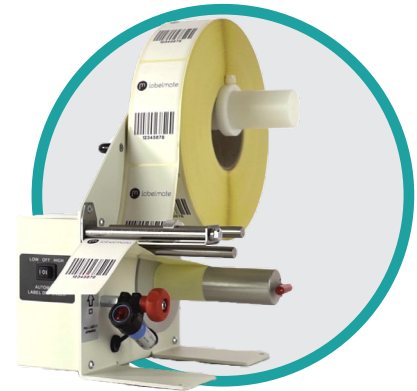
# Powered label dispensers

LABELMATE label dispensers are a quick and easy way to **dispense individual labels**. They use a peel and present design, meaning that as the material passes through the dispenser the label is peeled away from the backing material and presented at the front of the unit where it waits to be picked up by the operator. With different models to choose from these label dispensers **can handle virtually any job** you may have for them.

**LD-100 FOR LABELS UP TO 115MM WIDE**

**LD-200 FOR LABELS UP TO 165MM WIDE**

**LD-300 FOR LABELS UP TO 218MM WIDE**



- ✓ Small footprint to fit on any desk or packaging station
- ✓ Easy setup in less than 30 seconds
- ✓ Available in stainless steel (SS Version) (food & beverage, pharmaceutical market)
- ✓ Selectable speed (high-low) for applications with small or large labels

## OPTIONAL

- Universal sensor models for transparent labels
- Counter or pre-set counter for peeling off a precise number of labels
- Diameter extension to facilitate the use of labels rolls up to 300 mm
- Battery pack to work without external power supply for maximum mobility

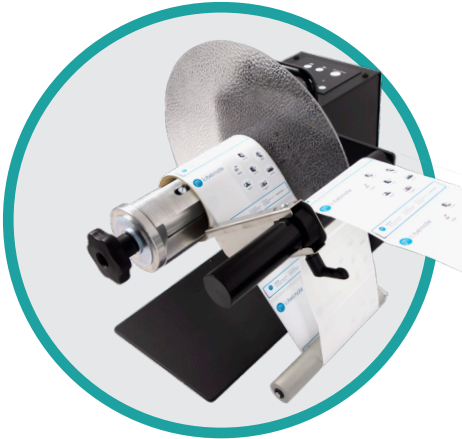
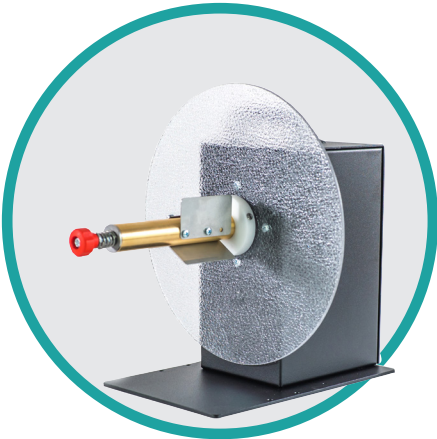
## MOST POPULAR CHOICES

P/N	MODEL	LABEL TYPE	MAX WIDTH mm	MIN. LENGTH mm	PRICE
LMD001	LD-100-RS		115	6	565 €
LMD005	LD-100-U	TRANSPARENT	115	20	665 €
LMD002	LD-200-RS		165	6	620 €
LMD006	LD-200-U	TRANSPARENT	165	20	720 €
LMD014	LD-300-RS-SS		218	50	820 €
LMD016	LD-300-U-SS	TRANSPARENT	218	50	920 €

# Label unwinders

Label unwinders provide a convenient way to **manage your supply roll of labels** as it feeds into a printer. You can use larger rolls of labels to minimize your unit label cost. The supply roll of labels does not have to be refreshed as often, **saving time and adding convenience**. External label rolls are always visible, making it easy to monitor the status of your label supply.

**LABELMATE** unwinders, powered or non-powered, provide the most advanced unwinding solutions available. They are **recommended for demanding production applications**.



- ✓ Small footprint to fit on any desk
- ✓ Speed up to 125cm/sec to work with the fastest barcode printers available on the market
- ✓ Large capacity for roll diameters up to 400mm
- ✓ Can be used as full featured rewinder without any special setup

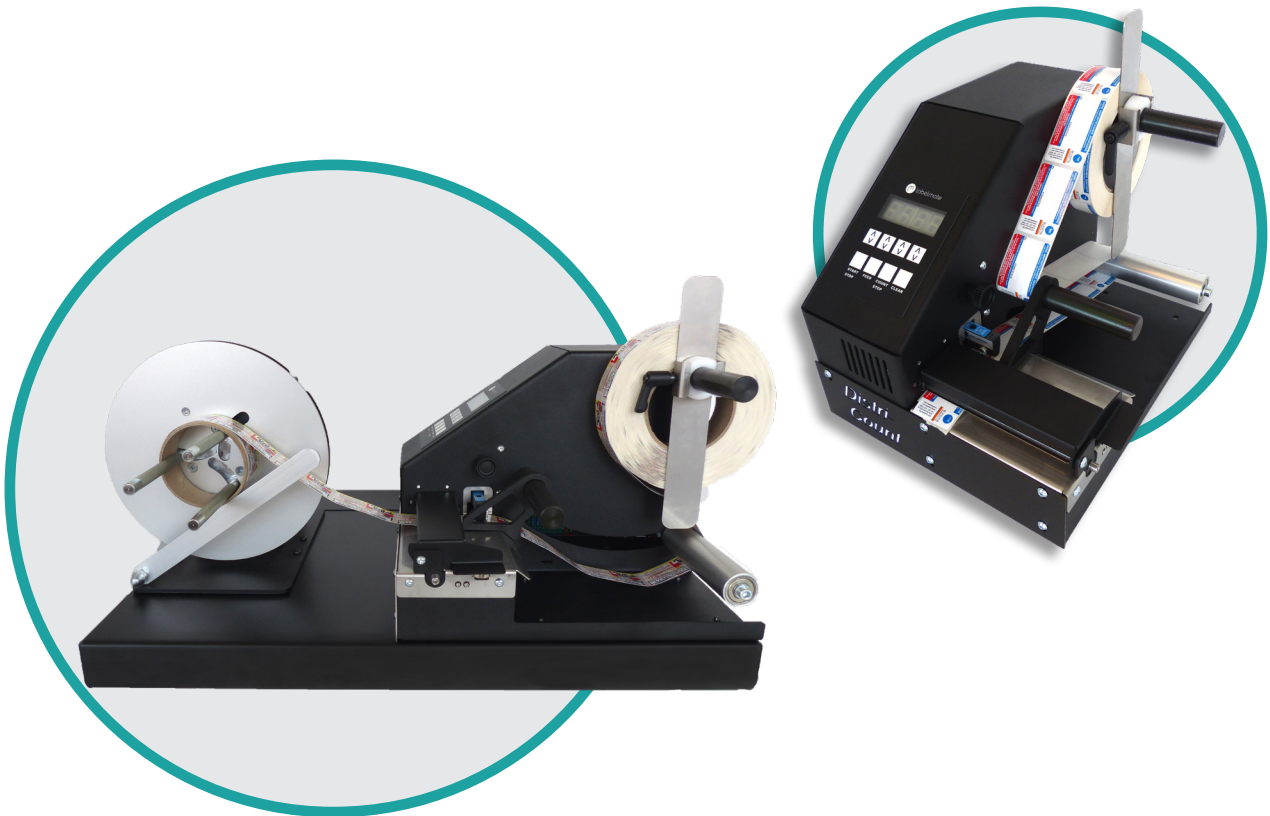
### MOST POPULAR CHOICES

P/N	MODEL	DESCRIPTION/PRINTER TYPE	MAX WIDTH mm	ROLL DIAM mm	S P E E D cm/sec	PRICE
LMU014	UCAT-S-MINI	UNPOWERED, DESKTOP	125	220	printer	195 €
LMU001	UCAT-S	UNWPOWERED, SEMI-INDUSTRIAL	155	300	printer	242 €
LMR	UNI-CAT	SEE REWINDER UNI-CAT	270	300	printer	
LMU012	UCAT-40	POWERED, INDUSTRIAL	170/270	400	125	1116/1238 €

# NEW Distri-Count

Unique Label Counter, counting precise from the 1st label and presenting the requested number of labels on tear-off bar. With a softkey control panel and large display, the Distri-Count will present you the requested number of labels or count your label roll before restocking it.

## DISTRI-COUNT LABEL-COUNTER



## MOST POPULAR CHOICES

P/N	MODEL	DESCRIPTION	PRICE
LMC030	DISTRI-ST	Distri-Count with Standard Label Sensor. Can handle any core size between 25,4 and 76mm.	1195 €
LMC032	DISTRI-ST-RW	Distri-Count with Standard Label Sensor. Can handle any core size between 25,4 and 76mm. Complete pack with integrated Base-Plate, MC-11-Rewinder with Adjustable Paper Guide and integrated Power Supply.	1635 €
LMX451	BATTERY PACK	Full Kit for mobile operations. Includes battery, charger & cables. Autonomy of circa 8h, recharging-cycle circa 8h.	325 €



Our entire team stays with you all the way.  
Don't hesitate to contact us:

MSC Computer Vertriebs-Gesellschaft mbH

Lötsch 39,  
D - 41334 Nettetal, Germany  
+49215395200

[info@msc-computer.de](mailto:info@msc-computer.de)  
[www.msc-computer.de](http://www.msc-computer.de)