

Product profile

SmartSystems™ Foundation



- Single, easy-to-use portal for hands-free device provisioning, deployment and management
- Minimizes the effort spent on software upgrades, monitoring and trouble-shooting
- Centralized, easy, stand-alone operation, remote administration and software license activation
- User-friendly mechanism for one-step or hands-free provisioning of Software Bundles
- Single step device connection to the network (Wifi/WWAN/Ethernet) and software load from FTP/HTTP site via barcodes generated by ScanNGo
- Monitors device health, including predicting battery replacement, enabling reduction in device downtime and TCO
- Facilitates asset tracking and reporting
- Integrates with industry leading device and system management solutions to enhance the overall value of your solution

SmartSystems™ Foundation is an easy-to-use software platform that provides IT Administrator and Integrators a single, integrated portal for hands-free provisioning, deployment and management of Intermec devices minimizing the effort spent on software upgrades, equipment tracking, device health monitoring, maintenance and trouble-shooting.

Foundation works with Intermec devices including mobile computers, RFID readers, printers and bar code scanners, located on-site or remote, to make the most of limited IT resources, and lower the total cost of ownership for Intermec equipment.

Intermec devices are packed with powerful features such as wireless communications, the latest Windows Mobile operating system, 802.1x security, Bluetooth® and extensive data collection support, all available when you take a device out of the box. Foundation provides easy access from one convenient location to the wide range of features integrated into Intermec equipment allowing customers to configure all of the settings for quick deployment.

Simplify Administration

An intuitive administrator's console provides centralized access to remote devices. Administrators can change device settings, configure OS upgrades, update software applications, monitor

device health and execute other changes directly from the console to save time and significantly cut costs. These updates can be provisioned to multiple devices in a single-step via software bundles.

SmartSystems-enabled devices appear on the console, providing real-time visibility to device health status and information via easy-to-interpret visuals. In addition, the built-in license manager enables easy license activation and management of Intermec software licenses.

SmartSystems Foundation slashes time and expenses by making it easy to customize, upgrade and optimize your system. System administrators can adjust settings at their desktop and push them to devices in the field without ever handling the equipment. They can also create and save a "golden" configuration image, then use the image to restore device settings and solve field issues, or quickly load, configure and deploy a replacement device.

Extend Capabilities of Leading Device Management Solutions

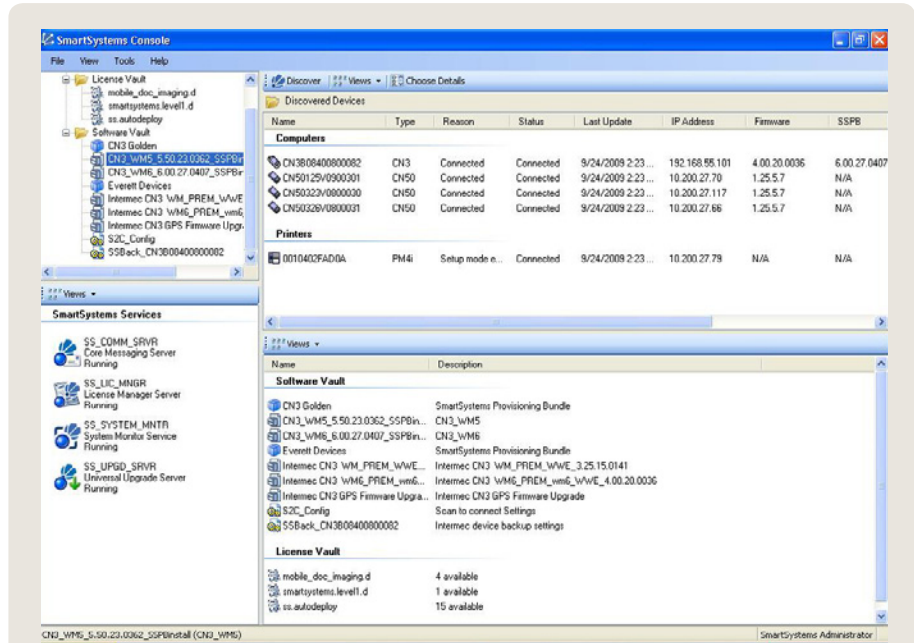
SmartSystems Foundation integrates with industry leading device management solutions including Wavelink Avalanche™ and SOTI MobiControl, giving you the flexibility to manage the unique Intermec device features and settings from within a single enterprise device management system.

System Requirements

SmartSystems Foundation is installed on a PC running Windows 7, Windows XP Professional, Windows Vista, Windows Server 2003 or Windows Server 2008. SmartSystems-enabled products from Intermec, such as the popular CN50/CK3/CN3/CN4 and the recently introduced CS40, are discovered by Foundation as soon as they are placed on the network. Devices do not have to be on the same subnet as the Foundation.

SmartSystems Enabled Products

Unlike management systems that only support a single type of device, SmartSystems Foundation provides a consistent way to manage a wide variety of Intermec products including Intermec computers, printers, RFID system components, software applications, barcode scanners and other peripheral and network devices. Many SmartSystems-enabled devices feature the Intermec Ready-to-Work Indicator, a blue LED that gives users visual confirmation that the device is on the network and functioning properly.



SmartSystems™ Foundation Console

- Discover devices and applications as they connect to the network
- Display connection level status and device state
- View device information including device type, device ID, and other resource information
- Configure device settings remotely
- Upgrade individual devices by dragging and dropping software or configuration settings onto device

North America

Corporate Headquarters

6001 36th Avenue West
Everett, Washington 98203
Phone: (425) 348-2600
Fax: (425) 355-9551

North Latin America Headquarters Office

Mexico
Phone: +52 55 52-41-48-00
Fax: +52 55 52-11-81-21

South Latin America Headquarters Office

Brazil
Phone: +55 11 5502.6770
Fax: +55 11 5502.6780

Europe/Middle East & Africa Headquarters Office

Reading, United Kingdom
Phone: +44 118 923 0800
Fax: +44 118 923 0801

Asia Pacific

Headquarters Office
Singapore
Phone: +65 6303 2100
Fax: +65 6303 2199

Internet

www.intermec.com
Worldwide Locations:
www.intermec.com/locations

Sales

Toll Free NA: (800) 934-3163
Toll in NA: (425) 348-2726
Freephone ROW:
00 800 4488 8844
Toll ROW: +44 134 435 0296

OEM Sales

Phone: (425) 348-2762

Media Sales

Phone: (513) 874-5882

Customer Service and Support

Toll Free NA: (800) 755-5505
Toll in NA: (425) 356-1799

Copyright © 2011 Intermec Technologies Corporation.
All rights reserved. Intermec is a registered trademark of
Intermec Technologies Corporation. All other trademarks are
the property of their respective owners. Printed in the U.S.A.
611673-01D 01/11

In a continuing effort to improve our products, Intermec
Technologies Corporation reserves the right to change
specifications and features without prior notice.

